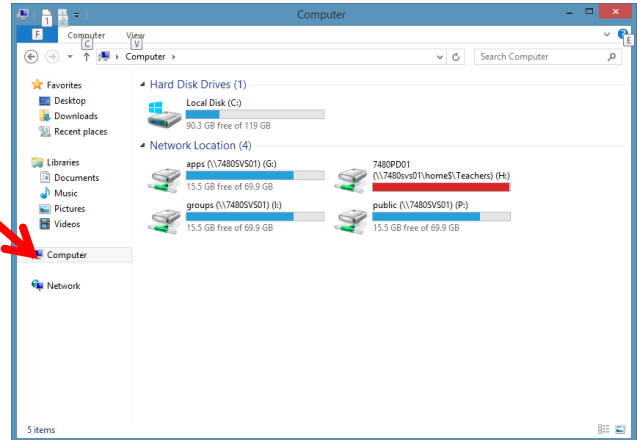


HP Revolve: Mapping a Network Drive

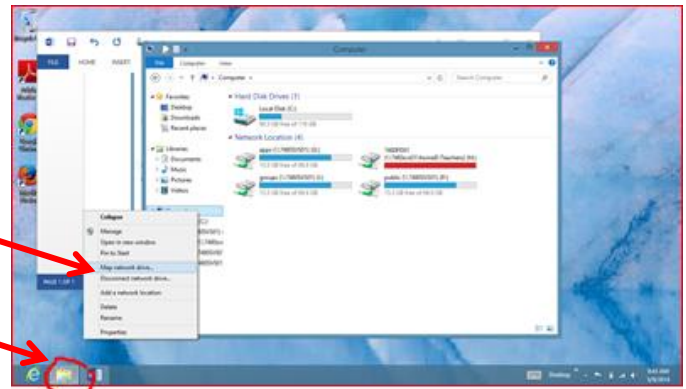
1. Login into REVOLVE
2. Choose DESKTOP



3. Click the File Folder on the bottom right of the screen
4. Choose Computer (right hand column)



5. RIGHT CLICK on Computer and choose:
MAP NETWORK DRIVE



File Folder

6. Drill Down and pick: I: drive
7. `\\currier code)svs01\groups`
For example: `\\5497svs01\groups`

